

# REFERENCE PLAN OF PART OF LOT A DISTRICT LOT 129 OSOYOOS DIVISION YALE DISTRICT PLAN EPP64708

PLAN EPP135575

PURSUANT TO SECTION 107 OF THE LAND TITLE ACT  
FOR ROAD DEDICATION PURPOSES

BCGS 82E.083

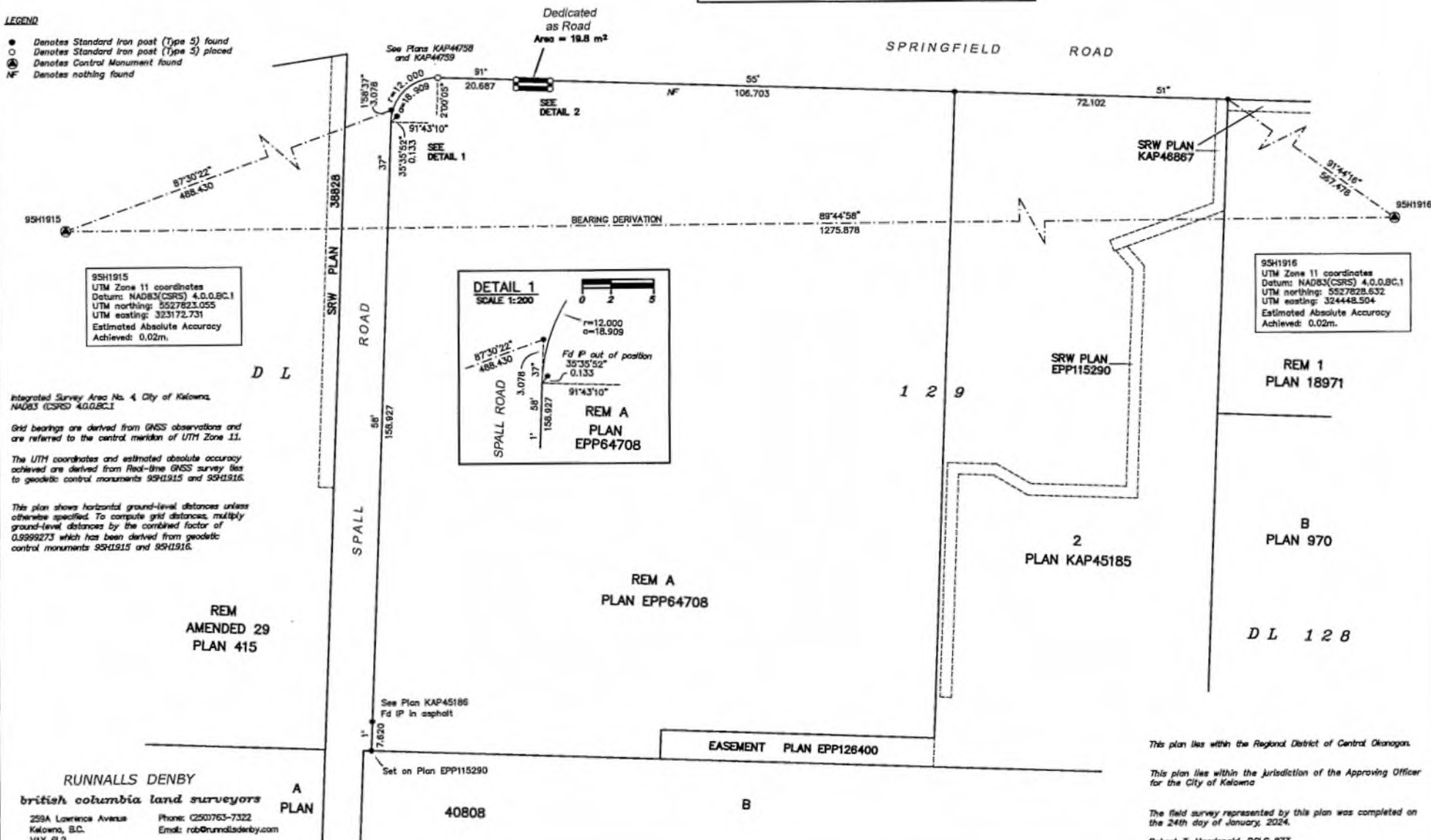
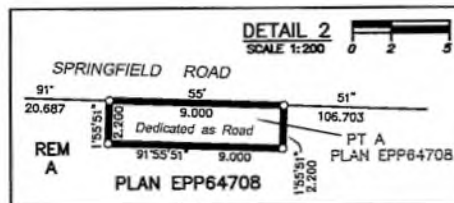


The intended plot size of this plan is 560mm in width by 432mm in height (C size) when plotted at a scale of 1:750

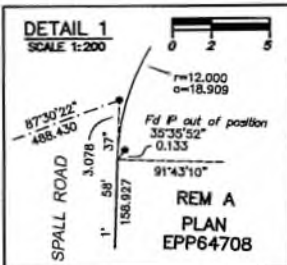
(All distances are in metres)

### LEGEND

- Denotes Standard Iron post (Type 5) found
- Denotes Standard Iron post (Type 5) placed
- ⊕ Denotes Control Monument found
- NF Denotes nothing found



95H1915  
UTM Zone 11 coordinates  
Datum: NAD83(CSRS) 4.0,0,0,BC.1  
UTM northing: 5527828.055  
UTM easting: 323172.731  
Estimated Absolute Accuracy  
Achieved: 0.02m.



95H1916  
UTM Zone 11 coordinates  
Datum: NAD83(CSRS) 4.0,0,0,BC.1  
UTM northing: 5527828.632  
UTM easting: 324448.504  
Estimated Absolute Accuracy  
Achieved: 0.02m.

Integrated Survey Area No. 4 City of Kelowna  
NA083 (CSRS) 4.0,0,0,BC.1

Grid bearings are derived from GNSS observations and are referred to the central meridian of UTM Zone 11.

The UTM coordinates and estimated absolute accuracy achieved are derived from Real-time GNSS survey ties to geodetic control monuments 95H1915 and 95H1916.

This plan shows horizontal ground-level distances unless otherwise specified. To compute grid distances, multiply ground-level distances by the combined factor of 0.9999273 which has been derived from geodetic control monuments 95H1915 and 95H1916.

**RUNNALLS DENBY**  
british columbia land surveyors  
259A Lawrence Avenue Kelowna, B.C. V1Y 6L2  
Phone: (250)763-7322  
Email: rob@runnallsdenby.com

This plan lies within the Regional District of Central Okanagan.  
This plan lies within the jurisdiction of the Approving Officer for the City of Kelowna.  
The field survey represented by this plan was completed on the 24th day of January, 2024.  
Robert T. Macdonald, BCLS 873